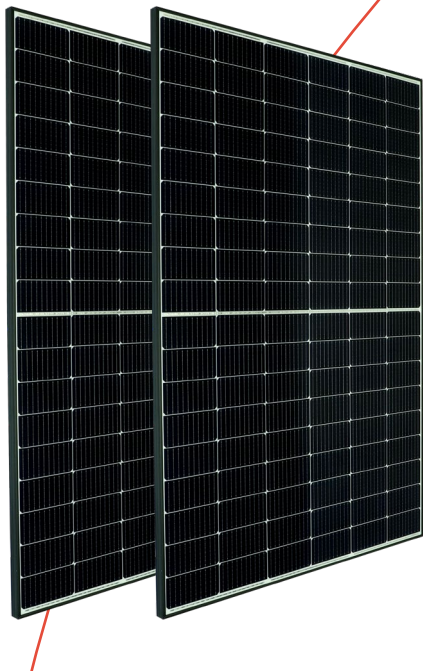


Have sun!

On modules & mounting systems
**15 years
combination
warranty**



[Product datasheet](#)

IBC MonoSol 400 | 405 | 410 CS10-HC

Long lifetime and high-performance
in combination.

Online shop:
Find our products
and further
information here.



Environmental impacts

Maximum lifetime under extreme conditions like high salt or ammonia exposure.

Ribbons

Improved light efficiency with angled light irradiation benefited by round cell connector design.

Multi-busbar technology

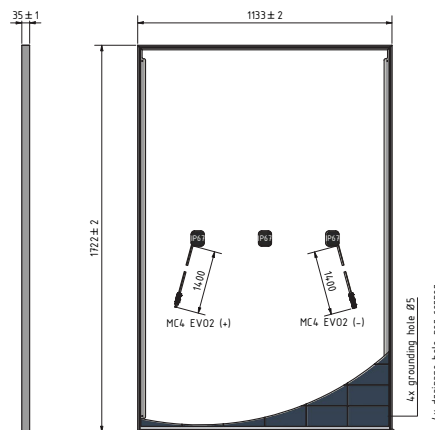
Reduced power and shading losses by using of 10 cell connectors.

You also benefit from:

- a positive power tolerance (-0/+5)
- increased mechanical stability (5400 Pa)
- a German guarantor
- 100% proved quality
- a 25-year performance warranty
- a 15-year product warranty



Have sun!



IBC MonoSol	400 CS10-HC	405 CS10-HC	410 CS10-HC	Operating conditions	
Article number	2003800032	2003800033	2003800034	Max. System Voltage (V) 1500	
Electrical data (STC)³				Application Class A	
STC Power Pmax (Wp)	400	405	410	Reverse Current Ir (A) 25	
STC Nominal Voltage Umpp (V)	30.56	30.73	30.90	Fuse protection from parallel strings 2	
STC Nominal Current Impp (A)	13.10	13.19	13.27	Protection class II (DIN EN 61140)	
STC Open Circuit Voltage Uoc (V)	36.87	37.07	37.22	Fire protection Class C (IEC 61730-ANSI/UL790)	
STC Short Circuit Current Isc (A)	13.55	13.64	13.74	Mechanical properties	
Module Efficiency (%)	20.50	20.75	21.01	Dimensions (L × W × H in mm) 1722 × 1133 × 35	
Power Tolerance (Wp)	-0/+5	-0/+5	-0/+5	Weight (kg) 22.5	
Electrical data (NMOT)				Max. Test load, Push/Pull (Pa) 5400/2400	
NMOT (°C)	45	45	45	Max. Design load ² , Push/Pull (Pa) 3600/1600	
800 W/m ² NMOT AM 1.5 Power Pmax (Wp)	300	303	307	Front sheet (mm) 3.2 (low-iron photovoltaic glass and anti-reflective coating)	
800 W/m ² NMOT AM 1.5 Nominal Voltage Umpp (V)	28.89	29.04	29.22	Frame anodized aluminium, sturdy hollow-chamber frame	
800 W/m ² NMOT AM 1.5 Open Circuit Voltage Uoc (V)	34.92	35.01	35.12	Cells 12 × 9 mono-crystalline silicon cells	
800 W/m ² NMOT AM 1.5 Short Circuit Current Isc (A)	11.08	11.14	11.12	Connection type EVO2	
Relative Efficiency Reduction at 200 W/m ² (%)	4.3	4.3	4.4	Warranties and certification	
Temperature coefficient (linear)				Product warranty 15 years ¹	
Tempcoeff Isc (%/°C)	0.048	0.048	0.048	Performance warranty 25 years ¹	
Tempcoeff Uoc (mV/°C)	-92.91	-93.42	-93.79	Annual degradation year 1 2.5%	
Tempcoeff Pmpp (%/°C)	-0.332	-0.332	-0.332	year 2-25 0.7%	
				Certification IEC 61215, IEC 61730-1/-2, ISO 9001, ISO 14001, OHSAS 18001	
				Packaging information	
				Number of modules per pallet 31	
				Number of pallets per 40' container 26	
				Dimensions incl. pallet (L × W × H in mm) 1760 × 1130 × 1255	
				Gross weight incl. double pallet (kg) 720	
				Stackability per pallet 2-fold	

1) The linear power and product warranty are only valid for installations within Europe and Japan. The warranty requires installation according to the valid installation instructions. Standard test conditions: 1000 W/m² irradiation with a spectral distribution of AM 1.5 and a cell temperature of 25°C. 800 W/m², NOCT. Information according to EN 60904-3 (STC). All values according to DIN EN 50380. Errors and changes reserved. The precise conditions and content can be taken from the respectively valid version of the product and power warranty, which you can obtain from your IBC Premium Partner.

2) Loads according to IEC 61215-2:2016, max. design load

3) Measurement tolerances +/- 3% at STC: 1000 W/m², 25 +/- 2 °C, AM 1.5

Your Premium Partner